

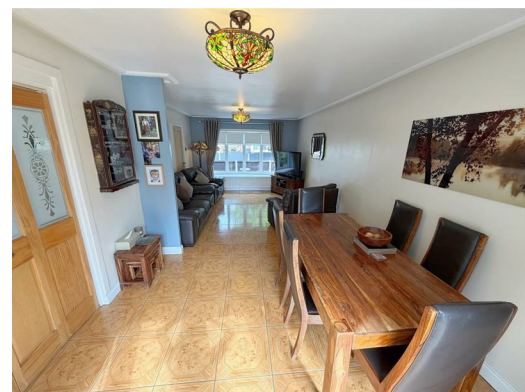


124 Irwell, Skelmersdale, WN8 6JZ

Offers around £160,000

Alpha-Move are delighted to offer this four bedroom mid terrace property in a sought after location on Irwell, WN8, close to schools, local amenities and road links. The layout consists of a spacious entrance hall, downstairs WC, modern kitchen and large open plan lounge diner to the ground floor, with four bedrooms, and a spacious shower room to the upper floor. Externally, there is a garden to the front and off road parking is available. To the rear of the property is a beautiful south facing garden with views overlooking the Damselfly Wetlands.

This property would be perfect for first time buyers, young families or investors. Early viewing is recommended.



124 Irwell, Skelmersdale, WN8 6JZ

Entrance Hall

6'4" x 9'3" (1.94 x 2.84)

UPVC Front door. Radiator. Storage cupboard x2.

WC

5'6" x 2'5" (1.68 x 0.76)

UPVC Window to front aspect. WC and sink unit.

Kitchen

11'3" x 11'3" (3.44 x 3.44)

Range of wall and base units. Integrated oven, hob, extractor, microwave and fridge freezer. UPVC Window and door to rear aspect. Radiator.

Lounge Diner

23'4" x 11'1" (7.13 x 3.39)

UPVC Window to front aspect. UPVC French Doors to rear aspect. Radiator.

Landing

11'8" x 10'1" (3.58 x 3.08)

Storage cupboard housing boiler.

Bedroom One

13'6" x 7'10" (4.12 x 2.41)

UPVC Window to rear aspect. Radiator.

Bedroom Two

10'11" x 9'4" (3.33 x 2.86)

UPVC Window to front aspect. Radiator.

Bedroom Three

11'3" x 5'11" (3.45 x 1.82)

UPVC Window to rear aspect. Radiator.

Bedroom Four

8'3" x 6'4" (2.52 x 1.94)

UPVC Window to rear aspect. Radiator.

Shower Room

6'7" x 5'4" (2.02 x 1.63)

Shower cubicle, sink & toilet. UPVC Window to front aspect. Heated towel rail.

